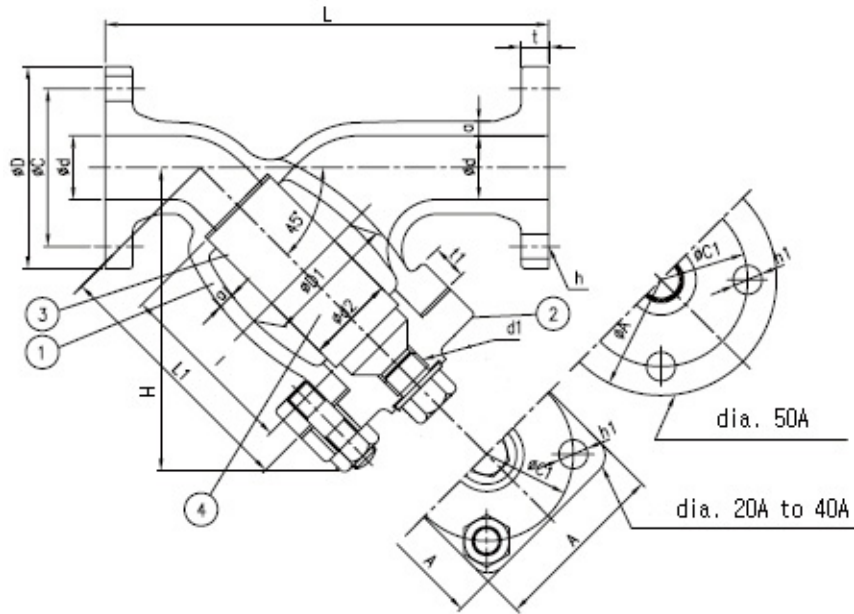




MARINE CAST IRON Y-TYPE STRAINER - JIS F7220/F7222



No.	Component	Material
1	Body	FC200
2	Bonnet	FC200
3	Strainer Cylinder	SUS304
4	Strainer Wire Geuze	SUS304 - W1

Nominal Pressure	Test Pressure Mpa[kgf/cm ²]
5K	1.03 [10.3]
10K	2.06 [21.0]

Fluid condition	MAX Working Pressure MPa[kgf/cm ²]	
	5K	10K
Staem of 220°C or less	0.49 [5.0]	0.98 [10.0]
Air and Gas		
Non-shock water of 120°C or less	0.69 [7.0]	1.37 [14.0]

Size	d	L	D1	a	L1	t1	Flange						Bonnet		Strainer Cylinder		H	kg
							D	C	No.	h	bolt	t	A	C1	d2	l		
20A	20	200	55	6	115	18	85	65	4	12	M10	14	80	75	30	80	128	4.19
25A	25	225	70	7	140	20	95	75	4	12	M10	14	100	90	40	95	153	6.55
32A	32	260	80	8	150	20	115	90	4	15	M12	16	105	100	50	105	164	8.56
40A	40	280	95	9	170	20	120	95	4	15	M12	16	110	105	60	120	180	10.8
50A	50	320	110	9	205	20	130	105	4	15	M12	16	155	120	70	150	208	15.2